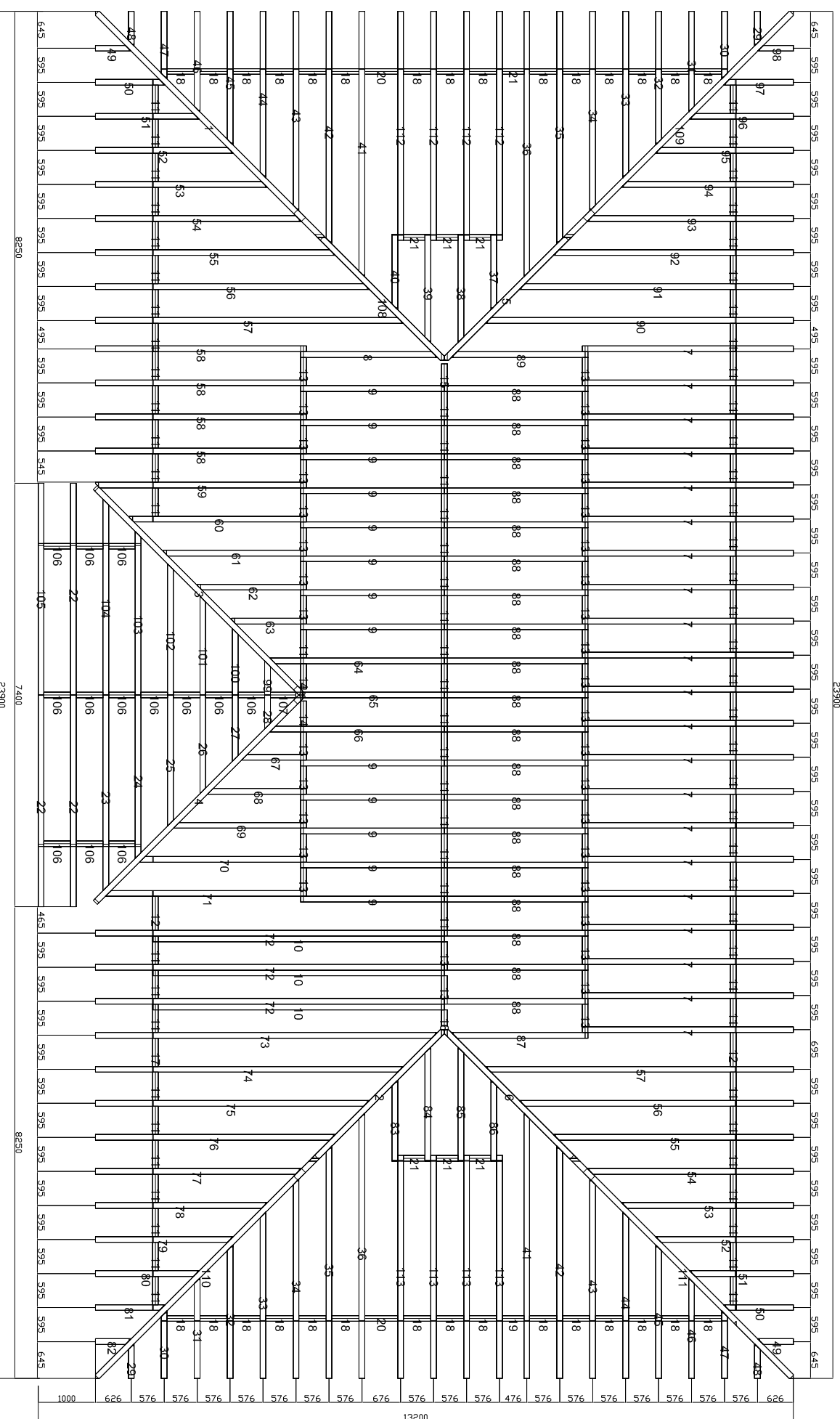


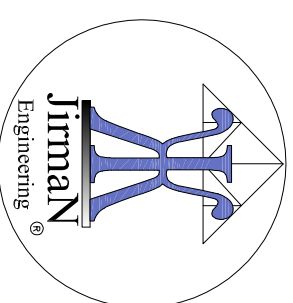
Distanțieri	Numr	Secțiune	Lungime	Canțit.
12	100x190 mm	595	626	2
20	100x190 mm	576	576	2
17	100x190 mm	495	495	1
11	100x190 mm	495	495	75
18	100x190 mm	476	476	30
106	100x190 mm	466	466	13
107	100x190 mm	445	445	1
14	100x190 mm	438	438	2
13	100x190 mm	395	395	35
15	100x190 mm	382	382	1
21	100x190 mm	376	376	1
19	100x190 mm	485	485	2
41	100x190 mm	376	376	1
21	100x190 mm	376	376	6
16	100x190 mm	282	282	1

D-MII	Numr	Secțiune	Lungime	Canțit.
109	100x190 mm	5762	5762	1
1	100x190 mm	5762	5762	1
110	100x190 mm	5617	5617	1
111	100x190 mm	5241	5241	1
3	100x190 mm	5241	5241	1
4	100x190 mm	5241	5241	1
2	100x190 mm	3341	3341	1
6	100x190 mm	3341	3341	1
5	100x190 mm	3197	3197	1
108	100x190 mm	3197	3197	1

Capriori	Numr	Secțiune	Lungime	Canțit.
72	100x190 mm	626	626	1
73	100x190 mm	626	626	1
74	100x190 mm	5643	5643	2
57	100x190 mm	5643	5643	2
90	100x190 mm	5643	5643	1
110	100x190 mm	5617	5617	1
10	100x190 mm	5382	5382	3
75	100x190 mm	5022	5022	1
91	100x190 mm	5022	5022	2
56	100x190 mm	5022	5022	2
41	100x190 mm	4865	4865	1
36	100x190 mm	4865	4865	2
41	100x190 mm	4865	4865	2
76	100x190 mm	4401	4401	1
92	100x190 mm	4401	4401	2
55	100x190 mm	4263	4263	1
42	100x190 mm	4263	4263	1
35	100x190 mm	4263	4263	2
112	100x190 mm	4233	4233	4
113	100x190 mm	4129	4129	4
58	100x190 mm	3908	3908	4
7	100x190 mm	3908	3908	21
22	100x190 mm	3863	3863	3
105	100x190 mm	3863	3863	1
59	100x190 mm	3851	3851	1
54	100x190 mm	3779	3779	2
77	100x190 mm	3779	3779	2
54	100x190 mm	3779	3779	2
71	100x190 mm	3725	3725	1
43	100x190 mm	3662	3662	1
43	100x190 mm	3662	3662	1
34	100x190 mm	3662	3662	2
23	100x190 mm	3631	3631	1
104	100x190 mm	3631	3631	1
66	100x190 mm	3241	3241	1
64	100x190 mm	3241	3241	1
60	100x190 mm	3230	3230	1
78	100x190 mm	3158	3158	1
94	100x190 mm	3158	3158	1
53	100x190 mm	3158	3158	2
70	100x190 mm	3104	3104	1
44	100x190 mm	3060	3060	2
33	100x190 mm	3060	3060	2
44	100x190 mm	3060	3060	1
24	100x190 mm	3040	3040	1
103	100x190 mm	3040	3040	1
9	100x190 mm	2674	2674	13
88	100x190 mm	2674	2674	19
65	100x190 mm	2664	2664	1
61	100x190 mm	2608	2608	1
79	100x190 mm	2537	2537	1
95	100x190 mm	2537	2537	1
52	100x190 mm	2517	2517	2
8	100x190 mm	2517	2517	1
87	100x190 mm	2513	2513	1
89	100x190 mm	2513	2513	1
69	100x190 mm	2482	2482	1
45	100x190 mm	2458	2458	1
45	100x190 mm	2458	2458	1
32	100x190 mm	2458	2458	2
25	100x190 mm	2450	2450	1
102	100x190 mm	2450	2450	1
85	100x190 mm	2099	2099	1
84	100x190 mm	2099	2099	1
39	100x190 mm	1985	1985	1
38	100x190 mm	1985	1985	1
62	100x190 mm	1967	1967	1
80	100x190 mm	1916	1916	1
51	100x190 mm	1916	1916	2
96	100x190 mm	1916	1916	1
68	100x190 mm	1861	1861	1
26	100x190 mm	1859	1859	1
101	100x190 mm	1859	1859	1
46	100x190 mm	1857	1857	1
46	100x190 mm	1857	1857	1
31	100x190 mm	1498	1498	2
86	100x190 mm	1498	1498	1
83	100x190 mm	1498	1498	1
37	100x190 mm	1393	1393	1
63	100x190 mm	1366	1366	1
81	100x190 mm	1295	1295	1
97	100x190 mm	1295	1295	1
50	100x190 mm	1295	1295	2
100	100x190 mm	1269	1269	1
27	100x190 mm	1255	1255	1
47	100x190 mm	1255	1255	1
30	100x190 mm	1240	1240	2
67	100x190 mm	678	678	1
99	100x190 mm	678	678	1
28	100x190 mm	678	678	1
82	100x190 mm	673	673	1
49	100x190 mm	673	673	2
98	100x190 mm	654	654	1
48	100x190 mm	654	654	1
29	100x190 mm	654	654	2
48	100x190 mm	654	654	1

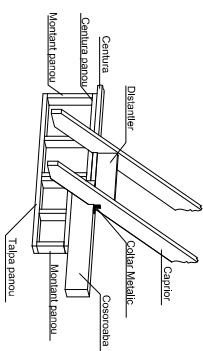


Nota: -Necesar Papuci de grinda (pentru prinderea capriorilor de dalie): 110 buc.
 -Necesar Caltare metalice 60x60 (pentru prinderea capriorilor de grinzi) 240 buc.



VERIFICATOR/ EXPERT	NUME	SEMNĂTURA	CERINȚA	REFERAT/EXPERTIZA NR./DATA
SPECIFICAȚIE	NUME	SEMNĂTURA	Scara: 1:16	Beneficiar: Politia Comunitara
PROIECTAT	ing.Lisnic E.	<i>[Signature]</i>	Data: Februarie 2009	Titlu planșă: Plan Capriori
DESENAT	ing.Lisnic E.	<i>[Signature]</i>		Proiect nr. 02/08
				Faza: D.D.E.
				Planșa nr. R-02

S.C. Jirman Engineering S.R.L.
 Str. Victoriei, Bl. 10, Sc. A, Et. 3, Ap. 14, Or. Victoria, Jud. Brasov
 Tel:0742879974 Fax:0368815748; E-mail:lisnic_eugeniu@yahoo.com
 Nr. de înmatriculare:J08/2667/03.10.2007



Detailu fixare capriori