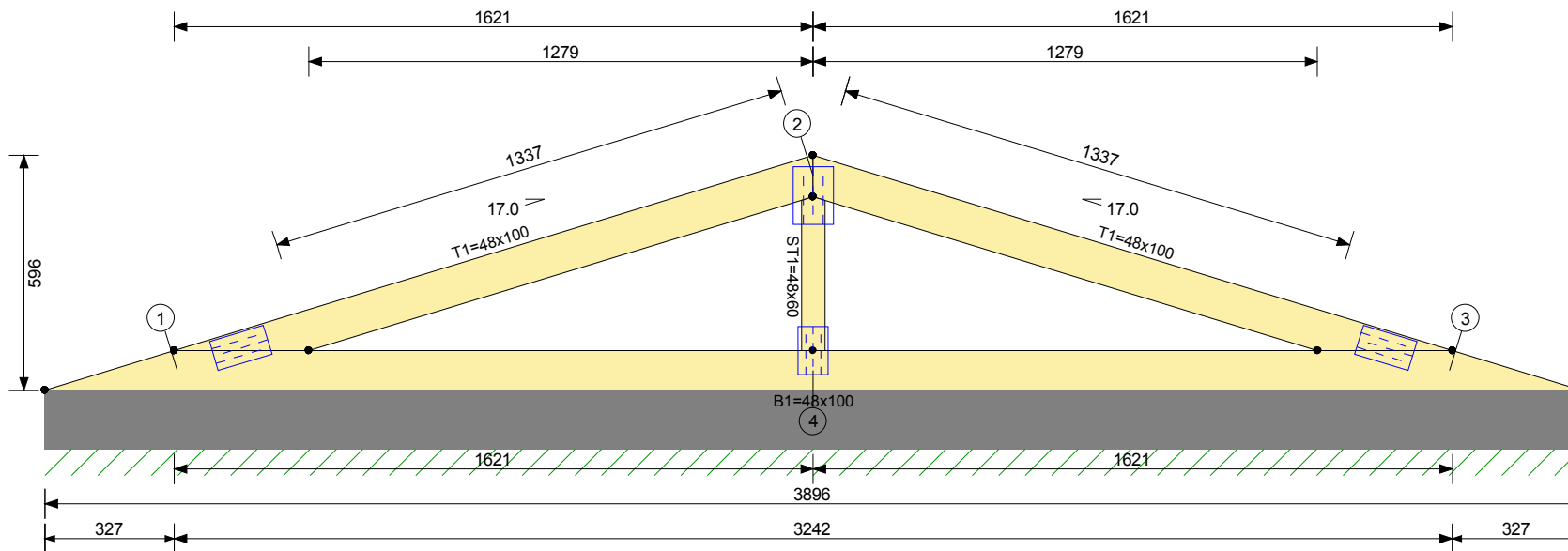






Principiu de ctv. idem:



Interax ferme: 900 mm  
 Interax sipci: 350 mm  
 Altitudine: 0 m  
 Cantit. Ferme: 1  
 Greutate Ferma: 16 kg

**Incarcari (kN/m2)**

Talpa sup.

Acoperire: 0.260  
 Zapada: 2.000  
 Vant: 0.920

Talpa inf.

Plafon: 0.260

**Sectiuni**

Talpa sup. 48x100 R I SM  
 Talpa inf. 48x100 R I SM  
 Zabrele 48x60 R I SM

Zabrele  
 Zabrele  
 Zabrele  
 Zabrele  
 Zabrele  
 Zabrele

Cubaj Net (m3) : 0.036  
 Cubaj Brut (m3) : 0.040

**Conectori**

Supr. totala GNA20 6.17  
 T150 2.98

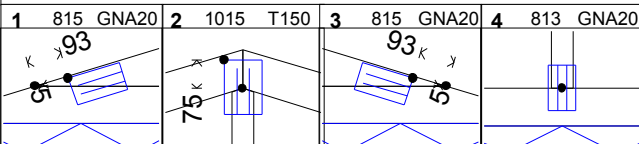
**React. Max. Reazem (kN)**

Nd	Ver(N)	C	Or(E)	C	Asc(E)	C
1	2.389	6	-0.686	3	-1.469	14
3	2.389	3	0.686	6	-1.469	14
4	4.188	1	0.000	1	-2.263	14

Scara 1:18

Acest desen trebuie insotit de nota de calcul.

Ctv. antiflambaj.



1 815 GNA20

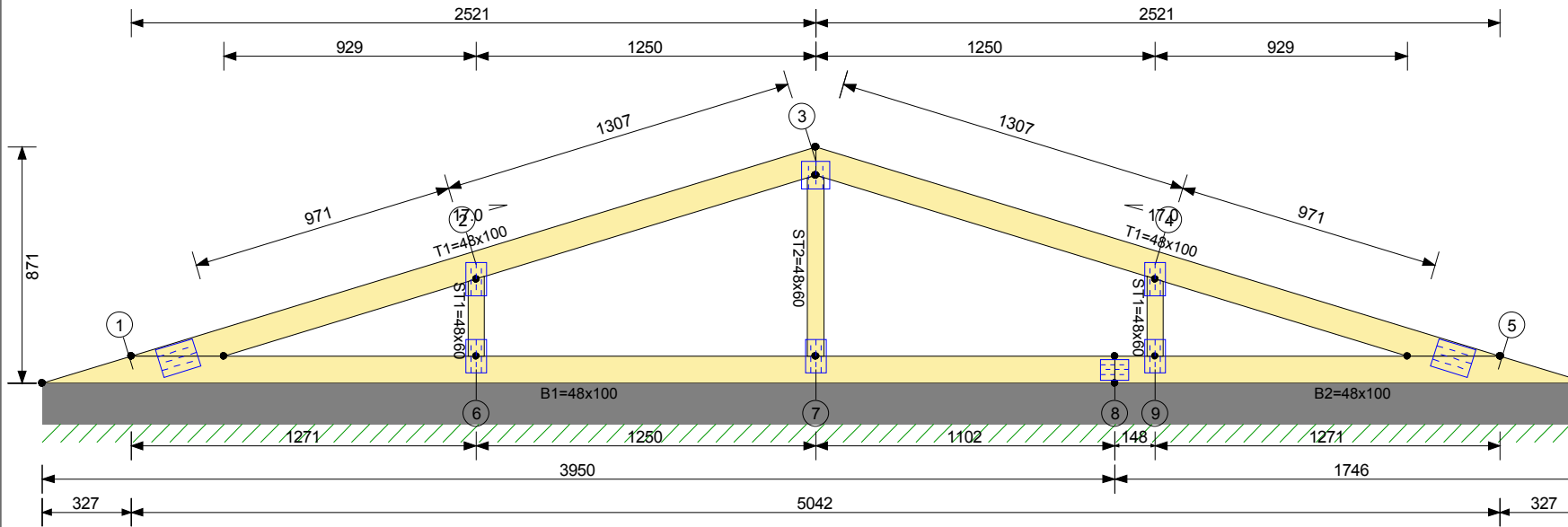
2 1015 T150

3 815 GNA20

4 813 GNA20



Principiu de ctv. idem:



Interax ferme: 900 mm  
 Interax sipci: 350 mm  
 Altitudine: 0 m  
 Cantit. Ferma: 1  
 Greutate Ferma: 25 kg

**Incarcari (kN/m2)**

Talpa sup.

Acoperire: 0.260  
 Zapada: 2.000  
 Vant: 0.920

Talpa inf.

Plafon: 0.260

**Sectiuni**

Talpa sup. 48x100 R I SM  
 Talpa inf. 48x100 R I SM  
 Zabrele 48x60 R I SM

Zabrele  
 Zabrele  
 Zabrele  
 Zabrele  
 Zabrele  
 Zabrele

Cubaj Net (m3) : 0.056  
 Cubaj Brut (m3) : 0.063

**Conectori**

Supr.totala GNA20 17.38  
 T150 1.49

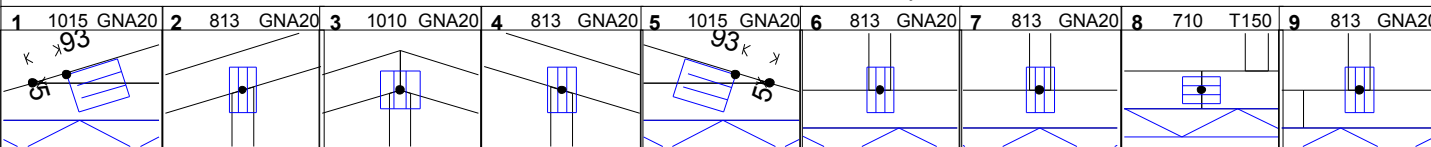
**React. Max. Reazem (kN)**

	Nd	Ver(N)	C	Or(E)	C	Asc(E)	C
1	1.413	6	-0.644	3	-0.661	14	
5	1.413	3	0.644	6	-0.661	14	
7	2.423	1	0.000	1	-1.026	14	
6	4.548	6	0.000	1	-2.877	14	
9	4.548	3	0.000	1	-2.877	14	

Scara 1:25

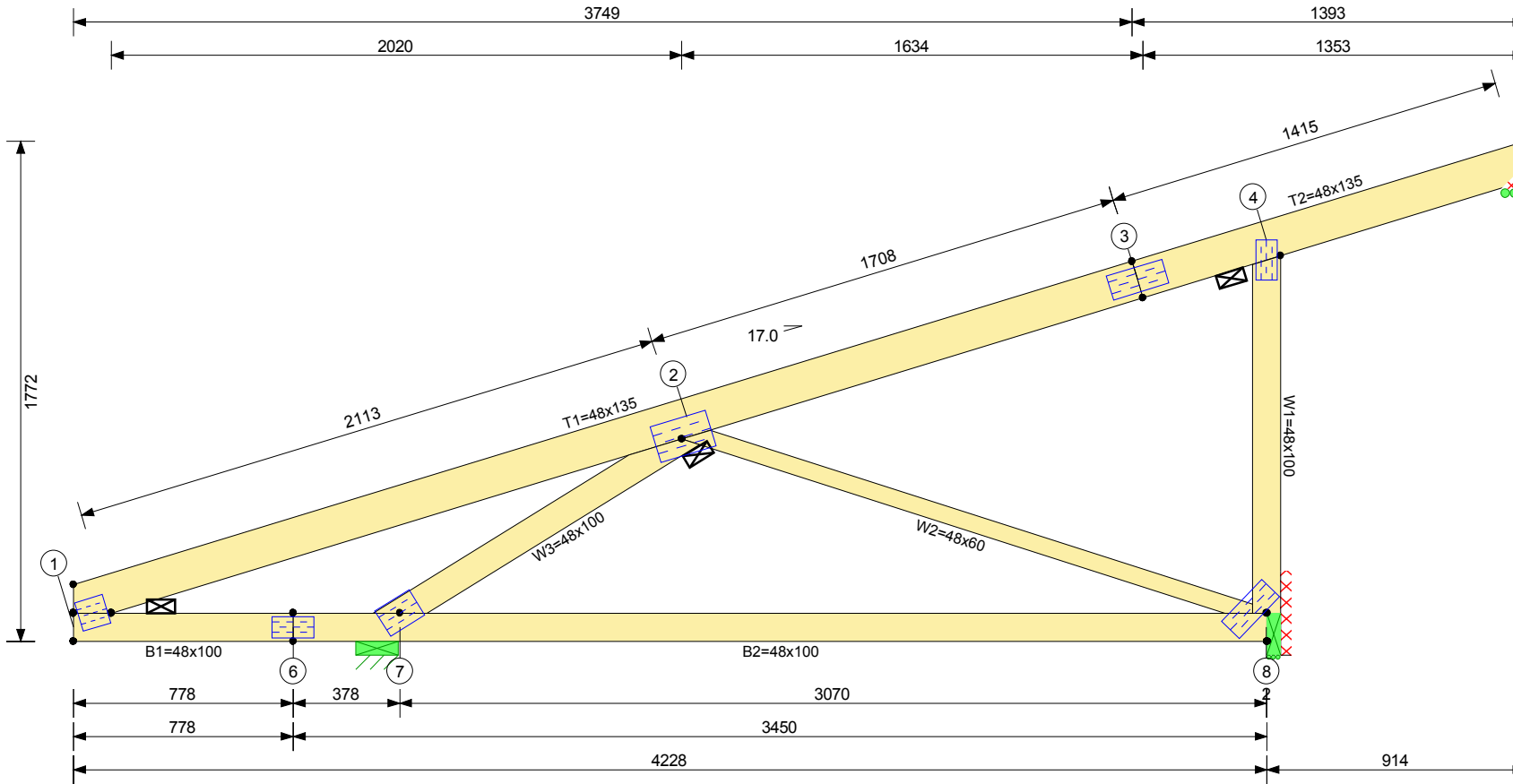
Acest desen trebuie insotit de nota de calcul.

Ctv. anti-flambaj.





Principiu de ctv. idem:



Interax ferme: 900 mm  
 Interax sipci: 350 mm  
 Altitudine: 0 m  
 Cantit. Ferme: 3  
 Greutate Ferma: 32 kg

**Incarcari (kN/m2)**

**Talpa sup.**  
 Acoperire: 0.260  
 Zapada: 2.000  
 Vant: 0.920

**Talpa inf.**

Plafon: 0.260

**Sectiuni**

Talpa sup. 48x100 R I SM  
 Talpa sup. 48x135 R I SM  
 Talpa inf. 48x100 R I SM  
 Zabrele 48x100 R I SM  
 Zabrele 48x60 R I SM

Cubaj Net (m3) : 0.074  
 Cubaj Brut (m3) : 0.079

**Conectori**

Supr. totala GNA20 12.67  
 T150 9.35

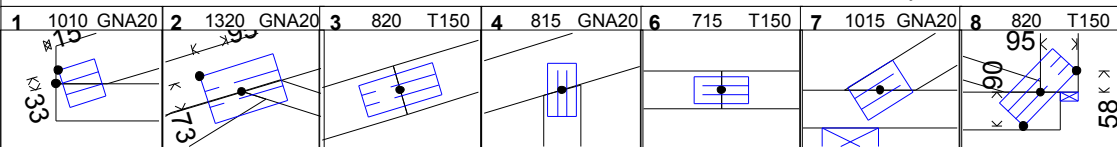
**React. Max. Reazem (kN)**

Nd	Ver(N)	C	Or(E)	C	Asc(E)	C
5	0.470	6	0.000	2	-0.357	14
8	5.844	6	0.000	2	-4.441	14
7	9.036	6	-3.512	14	-3.555	14

Scara 1:24

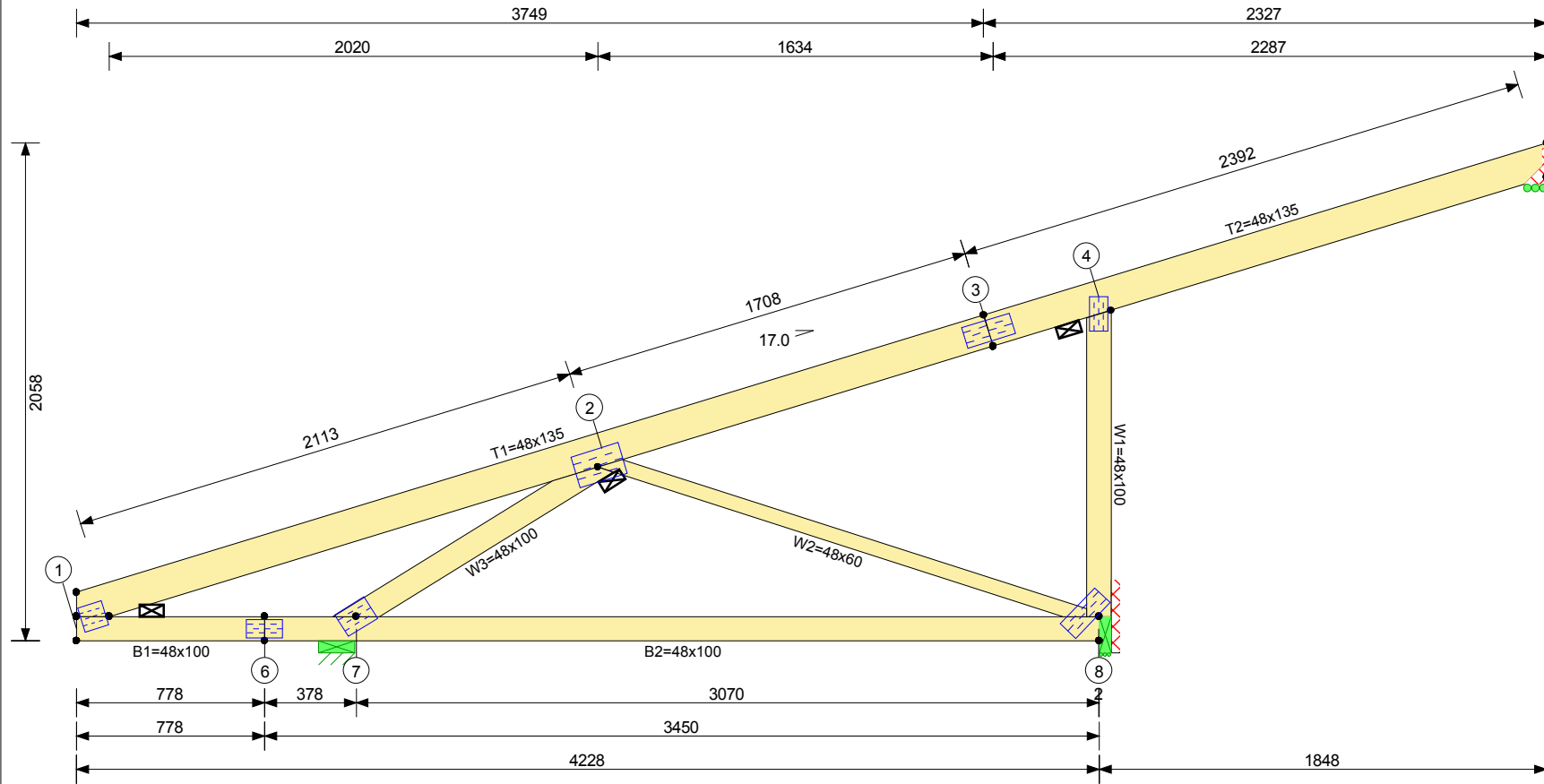
Acest desen trebuie insotit de nota de calcul.

Ctv. antiflambaj.





Principiu de ctv. idem:



Interax ferme: 900 mm  
 Interax sipci: 350 mm  
 Altitudine: 0 m  
 Cantit. Ferme: 2  
 Greutate Ferma: 35 kg

**Incarcari (kN/m2)**

Talpa sup.

Acoperire: 0.260  
 Zapada: 2.000  
 Vant: 0.920

Talpa inf.

Plafon: 0.260

**Sectiuni**

Talpa sup. 48x100 R I SM  
 Talpa sup. 48x135 R I SM  
 Talpa inf. 48x100 R I SM  
 Zabrele 48x100 R I SM  
 Zabrele 48x60 R I SM  
 Zabrele  
 Zabrele  
 Zabrele  
 Zabrele

Cubaj Net (m3) : 0.080  
 Cubaj Brut (m3) : 0.085

**Conectori**

Supr. totala GNA20 12.67  
 T150 9.35

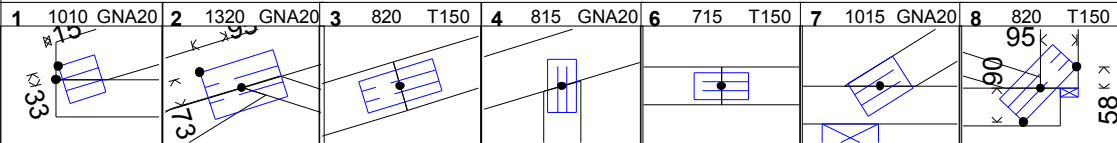
**React. Max. Reazem (kN)**

Nd	Ver(N)	C Or(E)	C Asc(E)	C
5	1.865	6	0.000	5 -1.451 14
8	6.991	6	0.000	4 -5.419 14
7	8.905	6	-4.118	14 -3.209 14

Scara 1:28

Acest desen trebuie insotit de nota de calcul.

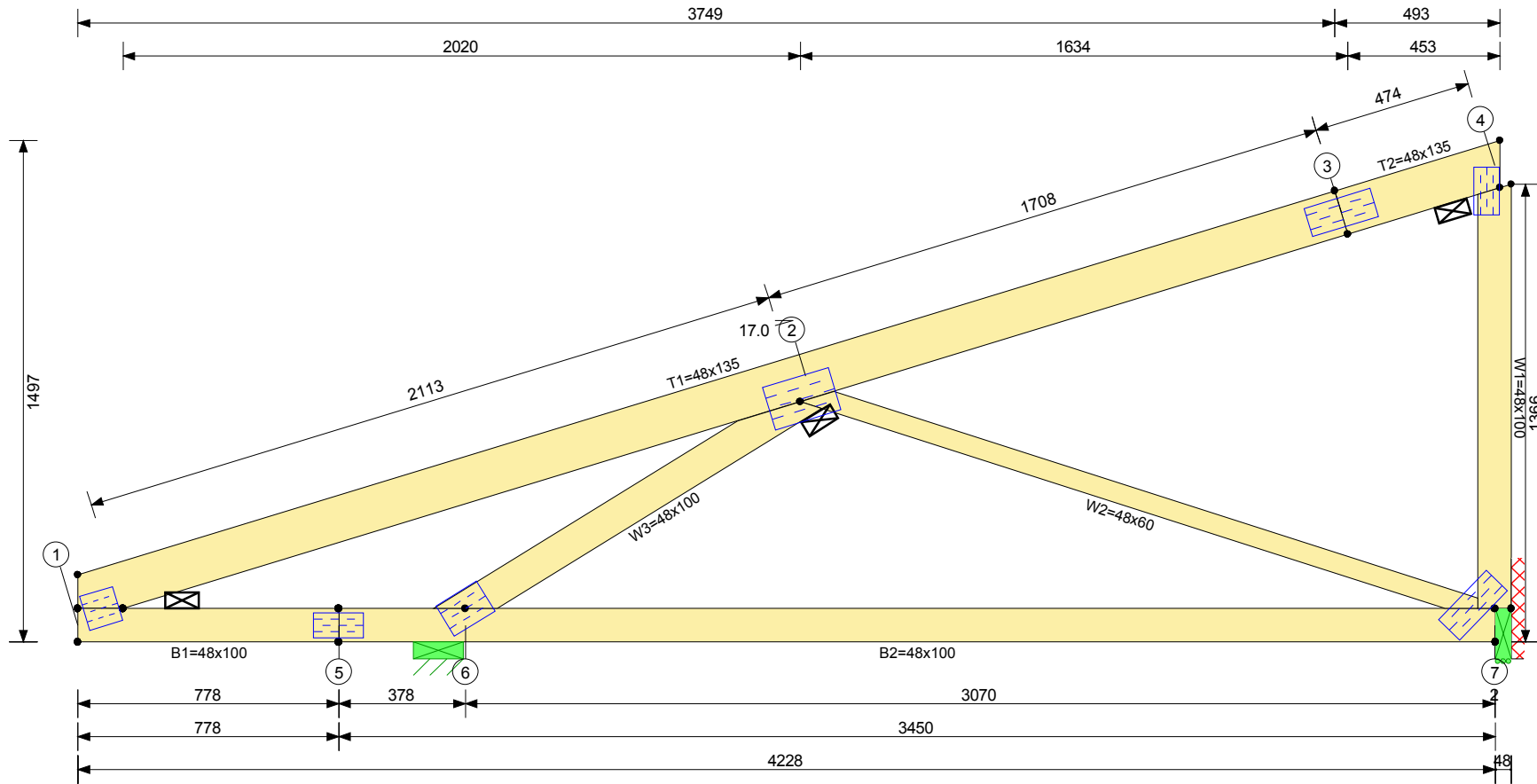
Ctv. antiflambaj.







Principiu de ctv. idem:



Interax ferme: 900 mm  
 Interax sipci: 350 mm  
 Altitudine: 0 m  
 Cantit. Ferma: 3  
 Greutate Ferma: 30 kg

**Incarcari (kN/m2)**

Talpa sup.  
 Acoperire: 0.260  
 Zapada: 2.000  
 Vant: 0.920

Talpa inf.  
 Plafon: 0.260

**Sectiuni**

Talpa sup. 48x100 R I SM  
 Talpa sup. 48x135 R I SM  
 Talpa inf. 48x100 R I SM  
 Zabrele 48x100 R I SM  
 Zabrele 48x60 R I SM  
 Zabrele  
 Zabrele  
 Zabrele  
 Zabrele

Cubaj Net (m3) : 0.068  
 Cubaj Brut (m3) : 0.076

**Conectori**

Supr.totala T150 9.35  
 3NA20 12.67

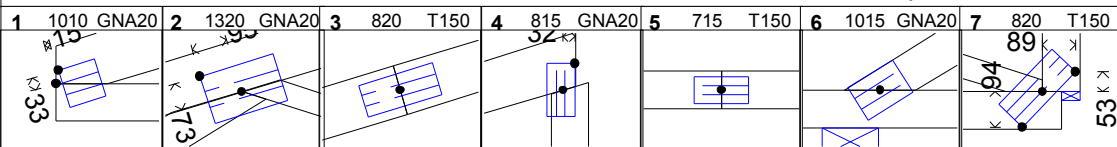
**React. Max. Reazem (kN)**

Nd	Ver(N)	C	Or(E)	C	Asc(E)	C
7	3.794	6	0.000	6	-2.751	14
6	9.261	6	-2.936	14	-3.961	14

Scara 1:20

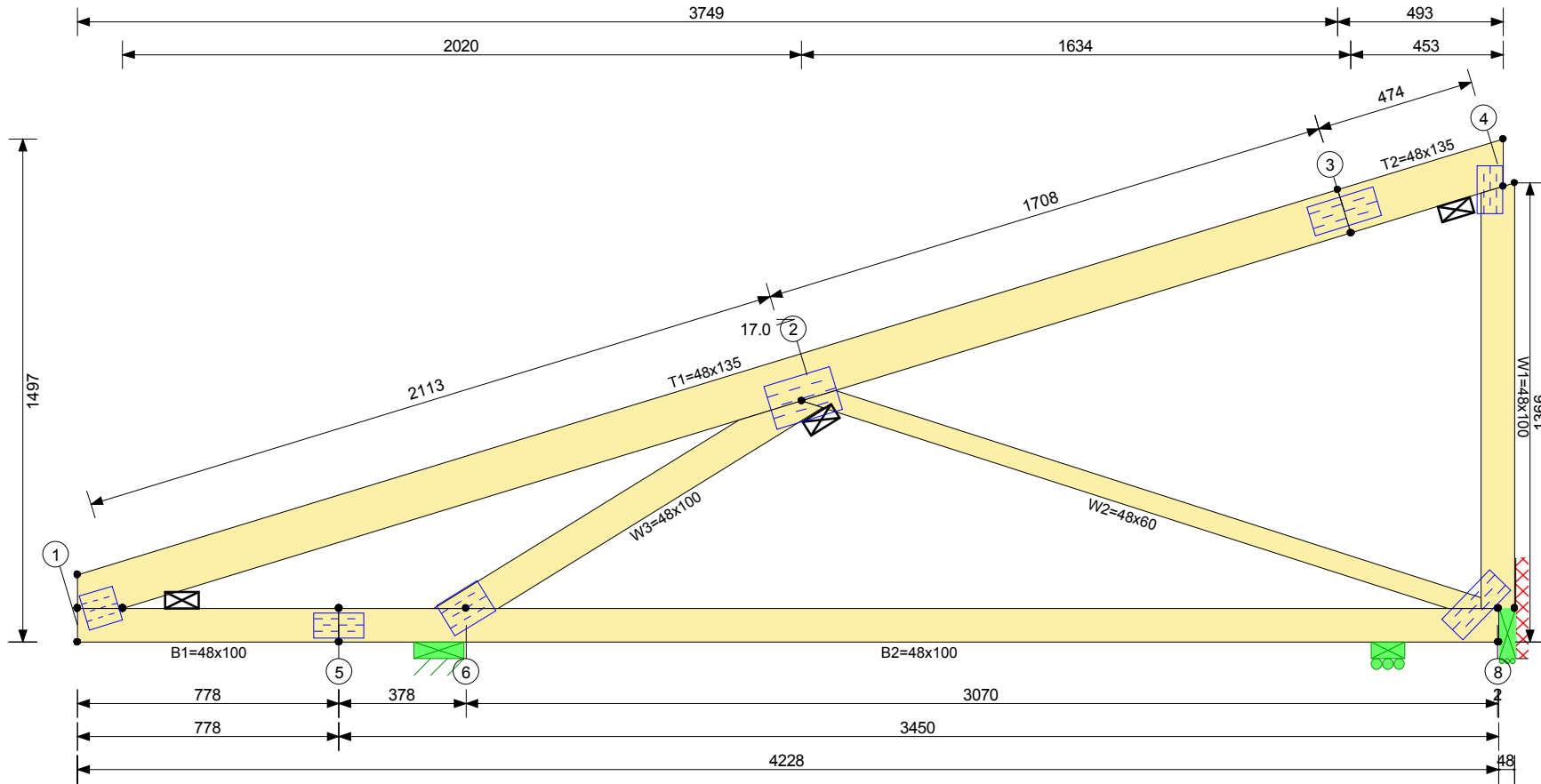
Acest desen trebuie insotit de nota de calcul.

Ctv. antiflambaj.





Principiu de ctv. idem:



Interax ferme: 900 mm  
 Interax sipci: 350 mm  
 Altitudine: 0 m  
 Cantit. Ferma: 1  
 Greutate Ferma: 30 kg

**Incarcari (kN/m2)**

Talpa sup.  
 Acoperire: 0.260  
 Zapada: 2.000  
 Vant: 0.920

Talpa inf.  
 Plafon: 0.260

**Sectiuni**

Talpa sup. 48x100 R I SM  
 Talpa sup. 48x135 R I SM  
 Talpa inf. 48x100 R I SM  
 Zabrele 48x100 R I SM  
 Zabrele 48x60 R I SM  
 Zabrele  
 Zabrele  
 Zabrele  
 Zabrele

Cubaj Net (m3) : 0.068  
 Cubaj Brut (m3) : 0.076

**Conectori**

Supr. totala GNA20 12.67  
 T150 9.35

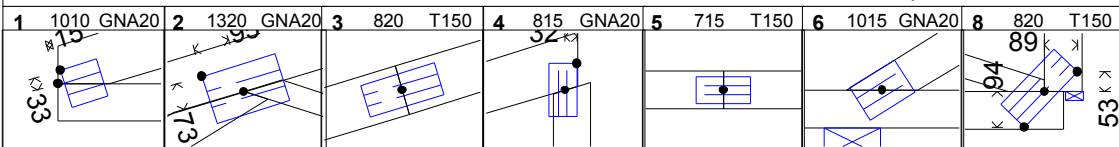
**React. Max. Reazem (kN)**

Nd	Ver(N)	C	Or(E)	C	Asc(E)	C
8	2.962	6	0.000	14	-3.597	14
6	9.163	6	-2.936	14	-4.062	14
7	1.136	11	0.000	1		

Scara 1:20

Acest desen trebuie insotit de nota de calcul.

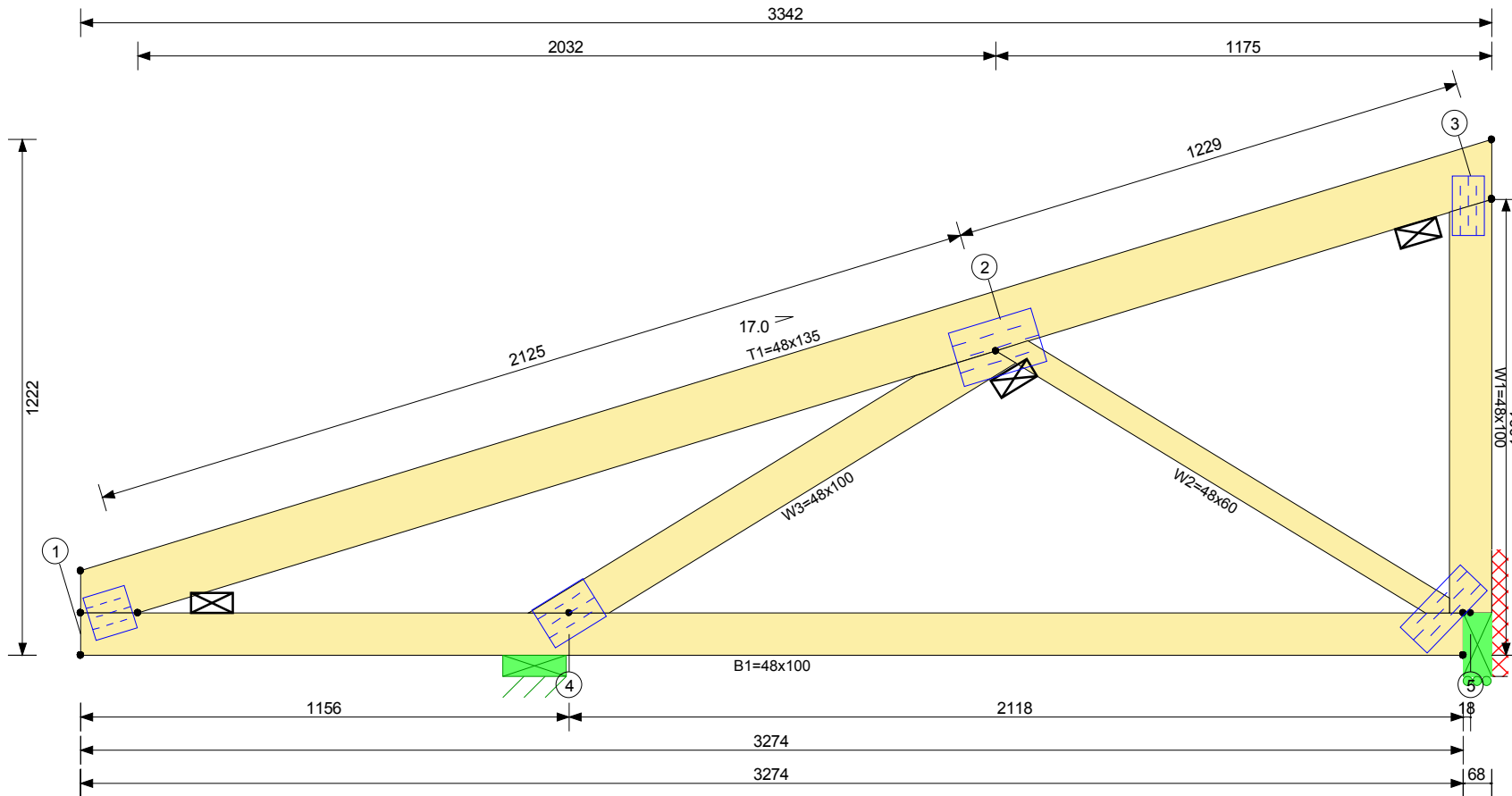
Ctv. antiflambaj.







Principiu de ctv. idem:



Interax ferme: 900 mm  
 Interax sipci: 350 mm  
 Altitudine: 0 m  
 Cantit. Ferma: 8  
 Greutate Ferma: 23 kg

**Incarcari (kN/m2)**

Talpa sup.

Acoperire: 0.260  
 Zapada: 2.000  
 Vant: 0.920

Talpa inf.

Plafon: 0.260

**Sectiuni**

Talpa sup. 48x100 R I SM  
 Talpa sup. 48x135 R I SM  
 Talpa inf. 48x100 R I SM  
 Zabrele 48x100 R I SM  
 Zabrele 48x60 R I SM  
 Zabrele  
 Zabrele  
 Zabrele  
 Zabrele

Cubaj Net (m3) : 0.053  
 Cubaj Brut (m3) : 0.059

**Conectori**

Supr. totala GNA20 12.67  
 T150 3.61

**React. Max. Reazem (kN)**

Nd	Ver(N)	C	Or(E)	C	Asc(E)	C
5	2.097	2	0.000	5	-1.791	14
4	8.231	6	-2.325	14	-3.434	14

Scara 1:16

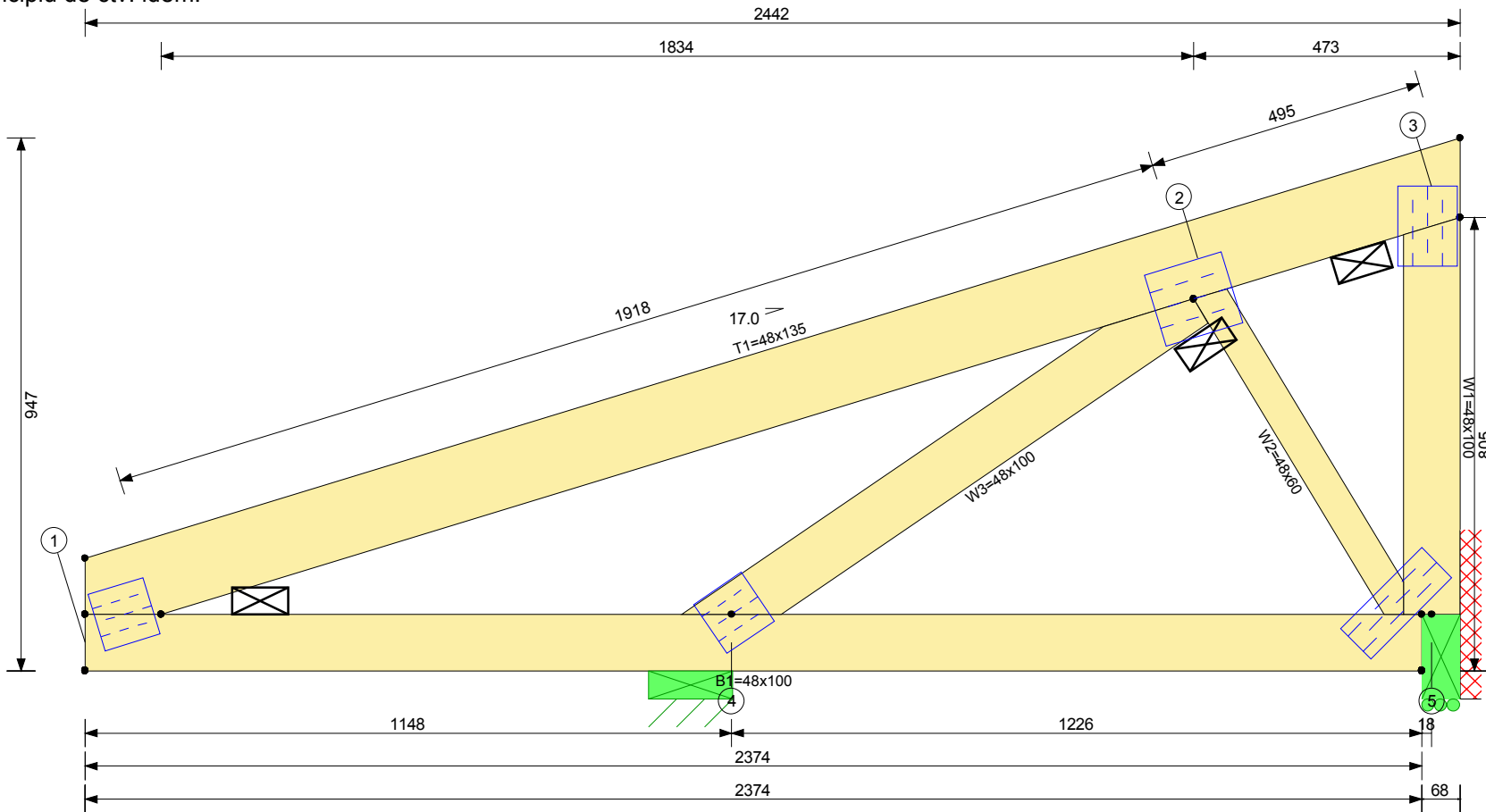
Acest desen trebuie insotit de nota de calcul.

Ctv. antiflambaj.

1	1010 GNA20	2	1320 GNA20	3	815 GNA20	4	1015 GNA20	5	820 T150



Principiu de ctv. idem:



Interax ferme: 900 mm  
 Interax sipci: 350 mm  
 Altitudine: 0 m  
 Cantit. Ferme: 8  
 Greutate Ferma: 17 kg

**Incarcari (kN/m2)**

Talpa sup.

Acoperire: 0.260  
 Zapada: 2.000  
 Vant: 0.920

Talpa inf.

Plafon: 0.260

**Sectiuni**

Talpa sup. 48x100 R I SM  
 Talpa sup. 48x135 R I SM  
 Talpa inf. 48x100 R I SM  
 Zabrele 48x100 R I SM  
 Zabrele 48x60 R I SM  
 Zabrele  
 Zabrele  
 Zabrele

Cubaj Net (m3) : 0.039  
 Cubaj Brut (m3) : 0.046

**Conectori**

Supr. totala GNA20 14.12

**React. Max. Reazem (kN)**

Nd	Ver(N)	C Or(E)	C Asc(E)	C
5	0.330	4	0.000	1 -0.713 14
4	7.654	6	-1.736	14 -3.082 14

Scara 1:12

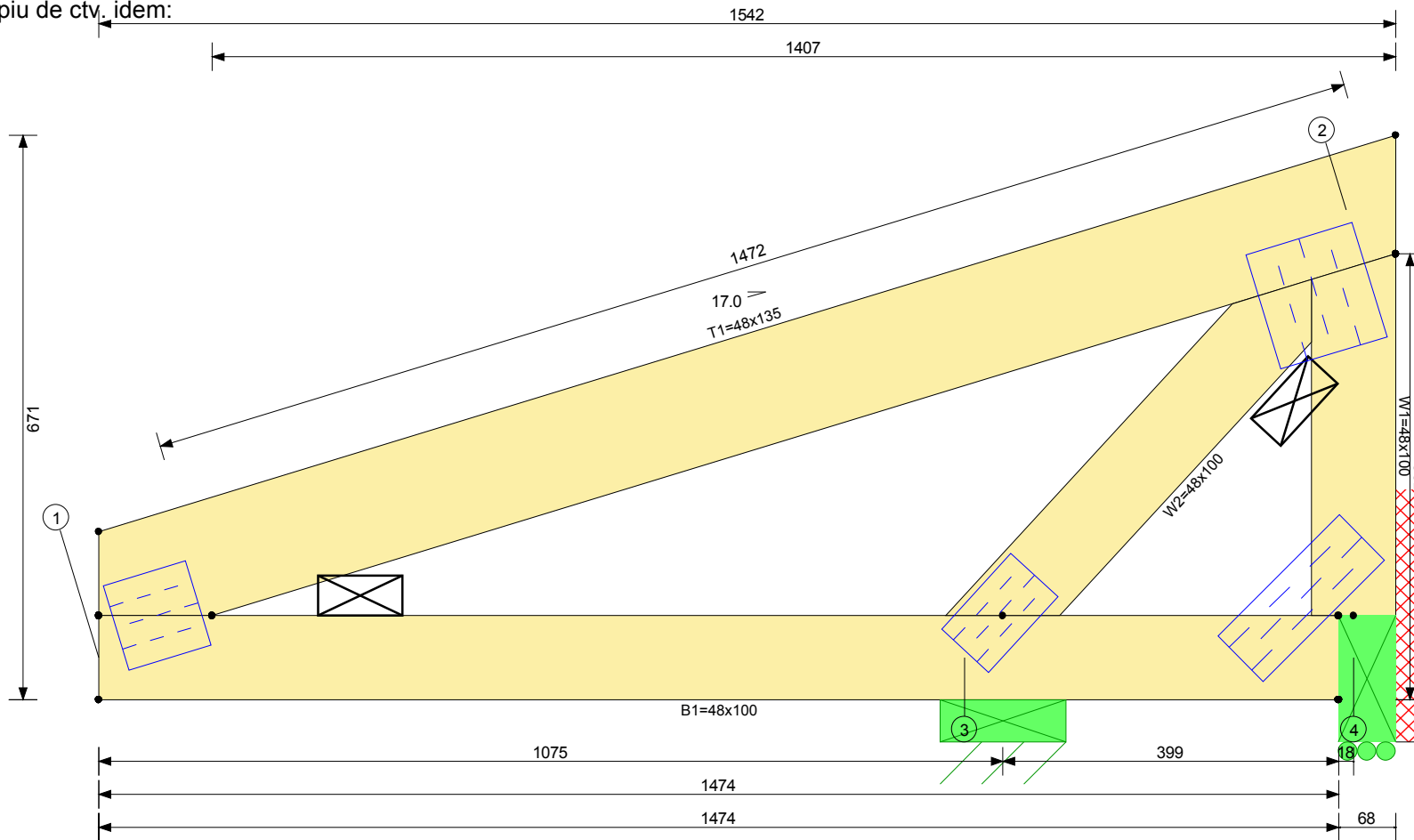
Acest desen trebuie insotit de nota de calcul.

Ctv. antiflambaj.

1	1010 GNA20	2	1315 GNA20	3	1015 GNA20	4	1010 GNA20	5	820 GNA20



Principiu de ctv. idem:



Interax ferme: 900 mm  
 Interax sipci: 350 mm  
 Altitudine: 0 m  
 Cantit. Ferme: 8  
 Greutate Ferma: 10 kg

**Incarcari (kN/m2)**

Talpa sup.  
 Acoperire: 0.260  
 Zapada: 2.000  
 Vant: 0.920

Talpa inf.  
 Plafon: 0.260

**Sectiuni**

Talpa sup. 48x100 R I SM  
 Talpa sup. 48x135 R I SM  
 Talpa inf. 48x100 R I SM  
 Zabrele 48x100 R I SM  
 Zabrele  
 Zabrele  
 Zabrele  
 Zabrele  
 Zabrele

Cubaj Net (m3) : 0.023  
 Cubaj Brut (m3) : 0.027

**Conectori**

Supr. totala GNA20 10.85

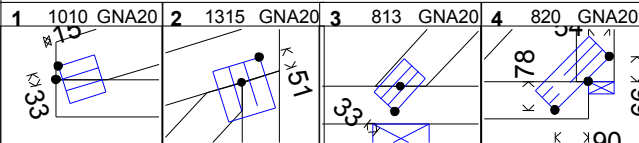
**React. Max. Reazem (kN)**

Nd	Ver(N)	C Or(E)	C Asc(E)	C
4	1.186	9	0.000	3 -3.290 6
3	8.220	6	-1.141	14 -3.164 14

Scara 1:8

Acest desen trebuie insotit de nota de calcul.

Ctv. antiflambaj.

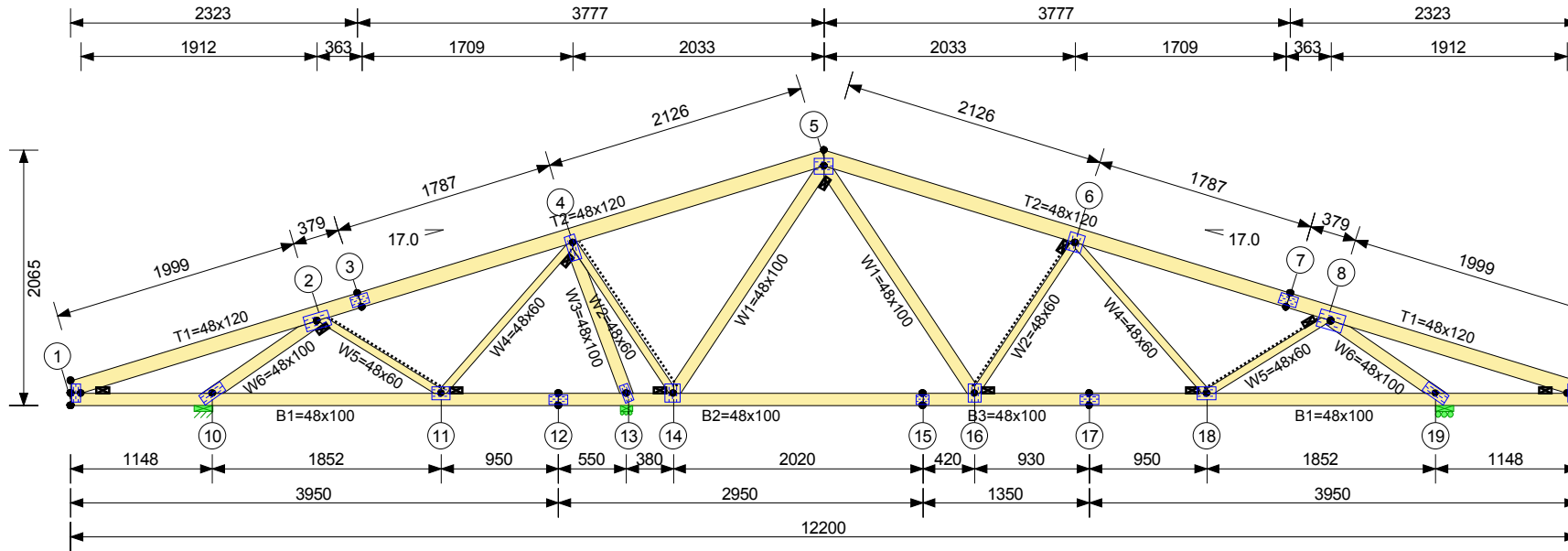








Principiu de ctv. idem:



Interax ferme: 900 mm  
 Interax sipci: 350 mm  
 Altitudine: 0 m  
 Cantit. Ferma: 1  
 Greutate Ferma: 86 kg

**Incarcari (kN/m2)**

Talpa sup.

Acoperire: 0.260  
 Zapada: 2.000  
 Vant: 0.920

Talpa inf.

Plafon: 0.260

**Sectiuni**

Talpa sup. 48x120 R I SM  
 Talpa inf. 48x100 R I SM  
 Zabrele 48x100 R I SM  
 Zabrele 48x60 R I SM

Zabrele  
 Zabrele  
 Zabrele  
 Zabrele

Cubaj Net (m3) : 0.195  
 Cubaj Brut (m3) : 0.209

**Conectori**

Supr.totala T150 58.94

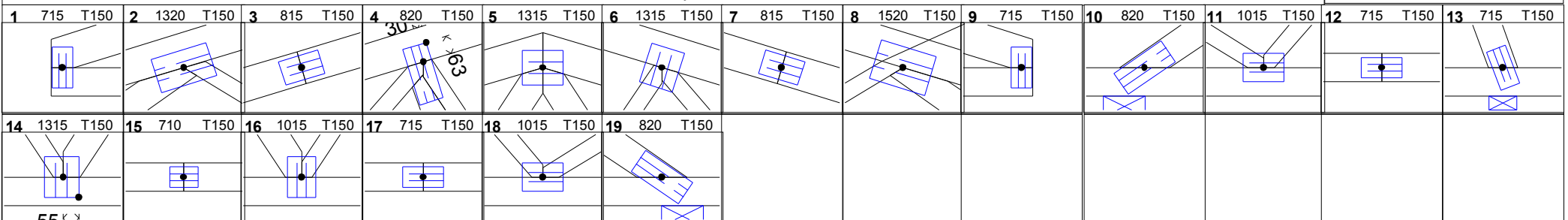
**React. Max. Reazem (kN)**

Nd	Ver(N)	C	Or(E)	C	Asc(E)	C
10	8.116	6	1.512	5	-3.917	14
19	11.829	1	0.000	1	-6.712	14
13	14.802	2	0.000	4	-8.753	14

Scara 1:56

Acest desen trebuie insotit de nota de calcul.

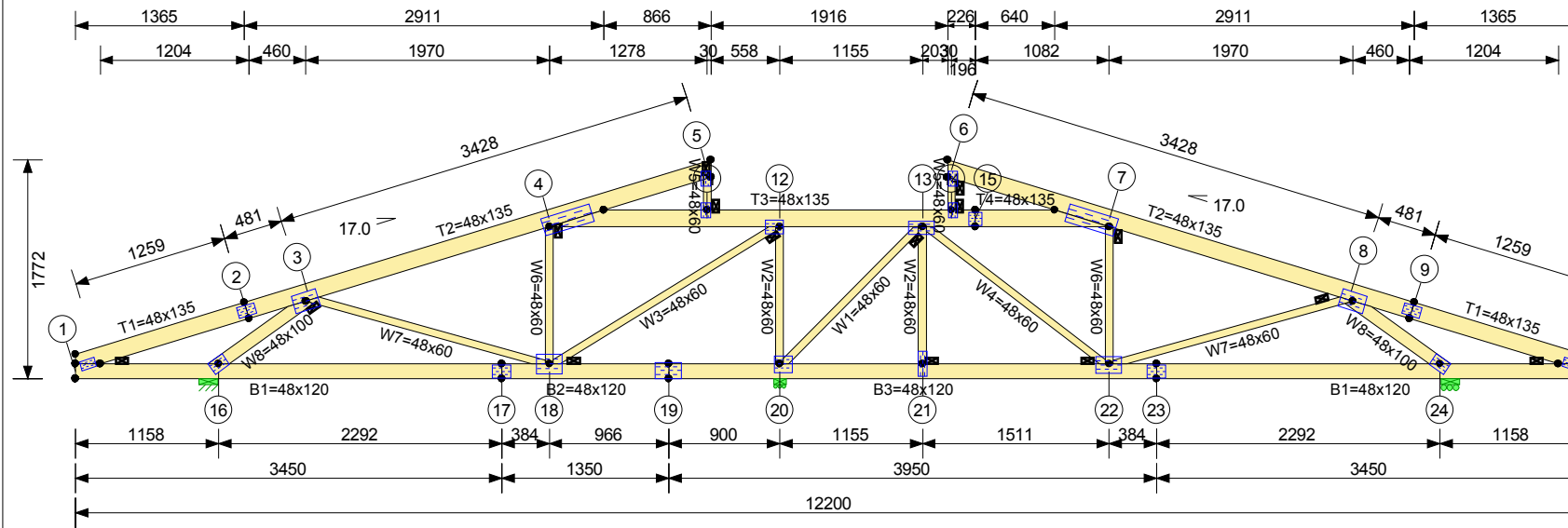
Ctv. antiflambaj.







Principiu de ctv. idem:



Interax ferme: 900 mm  
 Interax sipci: 350 mm  
 Altitudine: 0 m  
 Cantit. Ferme: 1  
 Greutate Ferma: 97 kg

**Incarcari (kN/m2)**

Talpa sup.

Acoperire: 0.260  
 Zapada: 2.000  
 Vant: 0.920

Talpa inf.

Plafon: 0.260

**Sectioni**

Talpa sup. 48x135 R I SM  
 Talpa inf. 48x120 R I SM  
 Zabrele 48x100 R I SM  
 Zabrele 48x60 R I SM

Cubaj Net (m3) : 0.221  
 Cubaj Brut (m3) : 0.239

**Conectori**

Supr.totala T150 56.06  
 3NA20 41.11

**React. Max. Reazem (kN)**

Nd	Ver(N)	C	Or(E)	C	Asc(E)	C
20	9.929	2	0.000	5	-7.439	14
16	10.448	6	-1.264	3	-5.172	14
24	10.073	1	0.000	2	-5.775	14

Scara 1:57

Acest desen trebuie insotit de nota de calcul.

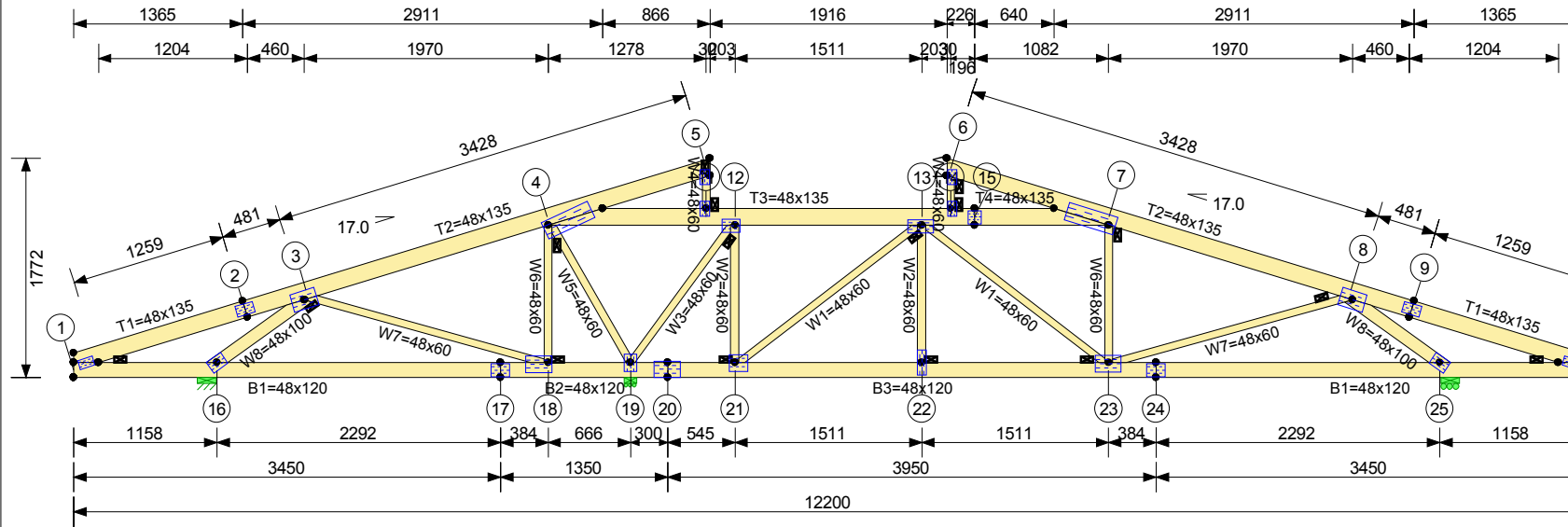
Ctv. antiinflamaj.

1	813	GNA20	2	815	T150	3	1520	T150	4	1540	T150	5	813	GNA20	6	813	GNA20	7	1540	T150	8	1520	T150	9	815	T150	10	813	GNA20	11	813	GNA20	12	1015	GNA20	13	1020	GNA20	





Principiu de ctv. idem:



Interax ferme: 900 mm  
 Interax sipci: 350 mm  
 Altitudine: 0 m  
 Cantit. Ferme: 1  
 Greutate Ferma: 98 kg

**Incarcari (kN/m2)**

Talpa sup.

Acoperire: 0.260  
 Zapada: 2.000  
 Vant: 0.920

Talpa inf.

Plafon: 0.260

**Sectioni**

Talpa sup. 48x135 R I SM  
 Talpa inf. 48x120 R I SM  
 Zabrele 48x100 R I SM  
 Zabrele 48x60 R I SM  
 Zabrele  
 Zabrele  
 Zabrele  
 Zabrele

Cubaj Net (m3) : 0.223  
 Cubaj Brut (m3) : 0.240

**Conectori**

Supr.totala T150 76.01  
 3NA20 22.26

**React. Max. Reazem (kN)**

Nd	Ver(N)	C Or(E)	C Asc(E)	C
19	11.277	2	0.000	5 -8.343 14
16	8.413	6	1.264	10 -3.665 14
25	10.852	1	0.000	6 -6.366 14

Scara 1:57

Acest desen trebuie insotit de nota de calcul.

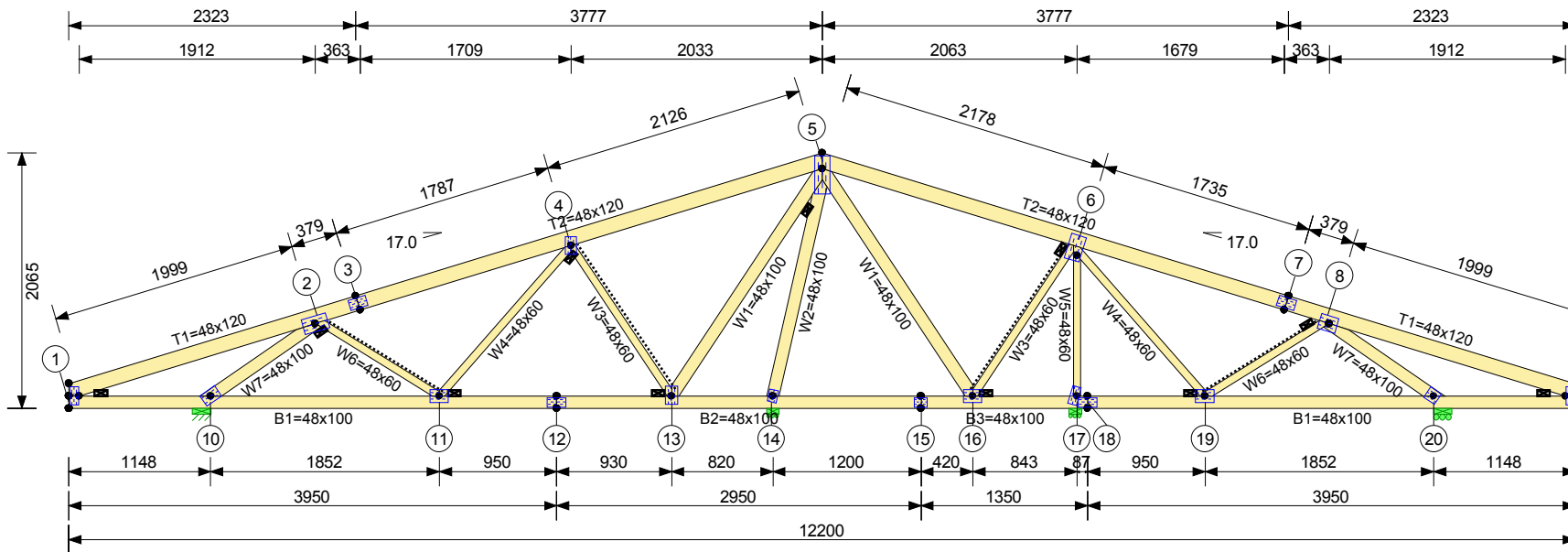
Ctv. antiflambaj.

1	813	GNA20	2	815	T150	3	1520	T150	4	1540	T150	5	813	GNA20	6	813	GNA20	7	1540	T150	8	1520	T150	9	815	T150	10	813	GNA20	11	813	GNA20	12	1015	GNA20	13	1020	GNA20	





Principiu de ctv. idem:



Interax ferme: 900 mm  
 Interax sipci: 350 mm  
 Altitudine: 0 m  
 Cantit. Ferma: 3  
 Greutate Ferma: 88 kg

**Incarcari (kN/m2)**

Talpa sup.

Acoperire: 0.260  
 Zapada: 2.000  
 Vant: 0.920

Talpa inf.

Plafon: 0.260

**Sectiuni**

Talpa sup. 48x120 R I SM  
 Talpa inf. 48x100 R I SM  
 Zabrele 48x100 R I SM  
 Zabrele 48x60 R I SM

Cubaj Net (m3) : 0.201  
 Cubaj Brut (m3) : 0.216

**Conectori**

Supr.totala T150 59.75

**React. Max. Reazem (kN)**

Nd	Ver(N)	C Or(E)	C Asc(E)	C
10	9.990	6	-1.512	4 -5.239 14
20	6.905	1	0.000	3 -3.815 14
14	10.814	6	0.000	1 -5.739 14
17	7.633	3	0.000	14 -4.562 14

Scara 1:56

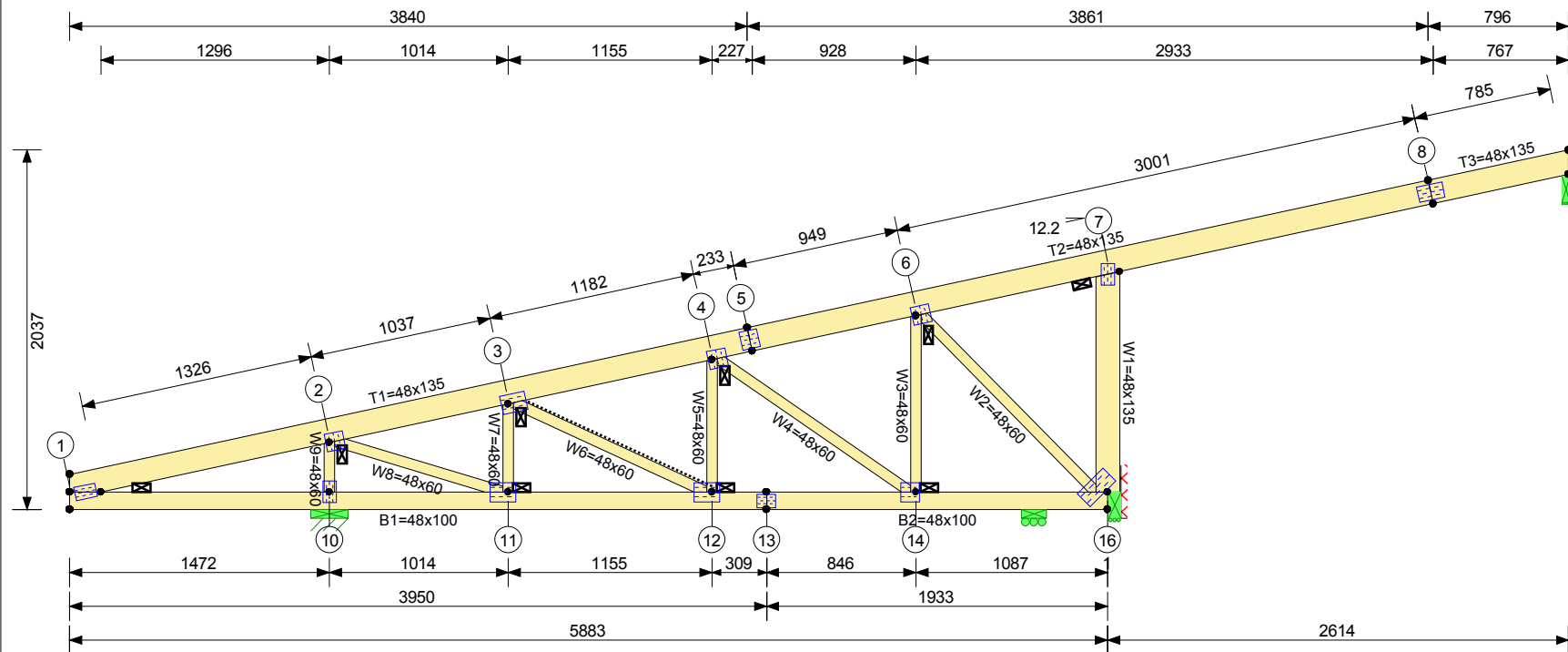
Acest desen trebuie insotit de nota de calcul.

Ctv. antiflambaj.

1	2	3	4	5	6	7	8	9	10	11	12	13
715 T150	1320 T150	815 T150	815 T150	1330 T150	1320 T150	815 T150	1315 T150	715 T150	1015 T150	1015 T150	715 T150	1015 T150
14	15	16	17	18	19	20						
710 T150	710 T150	1015 T150	715 T150	715 T150	1015 T150	1010 T150						



Principiu de ctv. idem:



Interax ferme: 100 mm  
 Interax sipci: 350 mm  
 Altitudine: 0 m  
 Cantit. Ferme: 1  
 Greutate Ferma: 50 kg

**Incarcari (kN/m2)**

Talpa sup.  
 Acoperire: 0.260  
 Zapada: 2.000  
 Vant: 0.920

**Talpa inf.**

Plafon: 0.260

**Sectiuni**

Talpa sup. 48x135 R I SM  
 Talpa inf. 48x100 R I SM  
 Zabrele 48x60 R I SM

Zabrele  
 Zabrele  
 Zabrele  
 Zabrele  
 Zabrele  
 Zabrele  
 Cubaj Net (m3) : 0.114  
 Cubaj Brut (m3) : 0.126

**Conectori**

Supr. totala GNA20 14.51  
 T150 18.64

**React. Max. Reazem (kN)**

Nd	Ver(N)	C	Or(E)	C	Asc(E)	C
9	0.501	6	0.000	12	-0.320	14
16	3.566	2	0.000	2	-3.345	14
10	2.107	9	-0.442	14	-3.191	6
15	0.631	2	0.000	1	-0.669	14

Scara 1:39

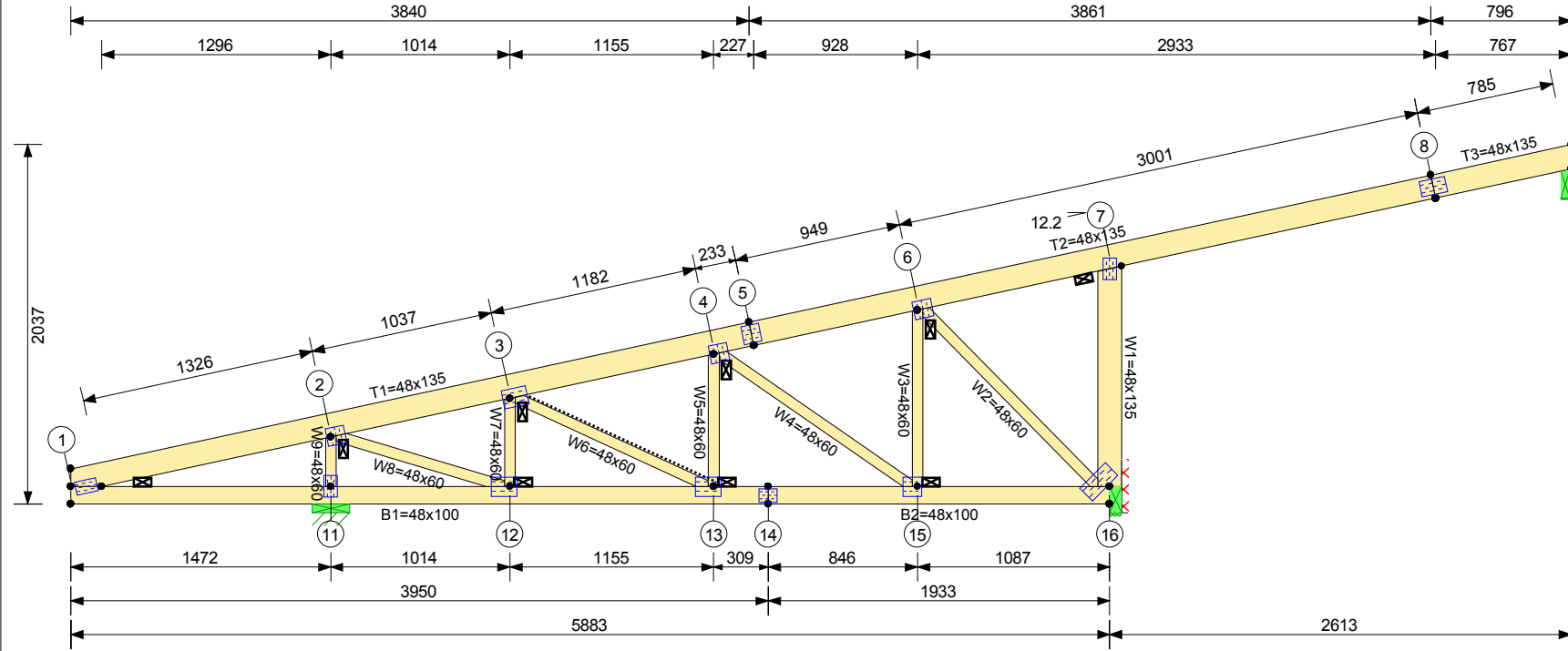
Acest desen trebuie insotit de nota de calcul.

Ctv. antiflambaj.

1	813 GNA20	2	1010 GNA20	3	1015 GNA20	4	1010 GNA20	5	1010 T150	6	1010 GNA20	7	813 GNA20	8	815 T150	10	813 GNA20	11	1015 GNA20	12	1015 GNA20	13	710 T150	14	1010 GNA20
16	1020 T150																								



Principiu de ctv. idem:



Interax ferme: 100 mm  
 Interax sipci: 350 mm  
 Altitudine: 0 m  
 Cantit. Ferme: 3  
 Greutate Ferma: 50 kg

**Incarcari (kN/m2)**  
 Talpa sup.  
 Acoperire: 0.260  
 Zapada: 2.000  
 Vant: 0.920

Talpa inf.  
 Plafon: 0.260

**Sectiuni**  
 Talpa sup. 48x135 R I SM  
 Talpa inf. 48x100 R I SM  
 Zabrele 48x60 R I SM

Zabrele  
 Zabrele  
 Zabrele  
 Zabrele  
 Zabrele  
 Cubaj Net (m3) : 0.114  
 Cubaj Brut (m3) : 0.126

**Conectori**  
 Supr.totala GNA20 14.51  
 T150 18.64

**React. Max. Reazem (kN)**

Nd	Ver(N)	C	Or(E)	C	Asc(E)	C
16	4.131	2	0.000	3	-3.950	14
11	2.112	9	-0.444	14	-3.142	6
9	0.517	6	0.000	4	-0.329	14

Scara 1:39

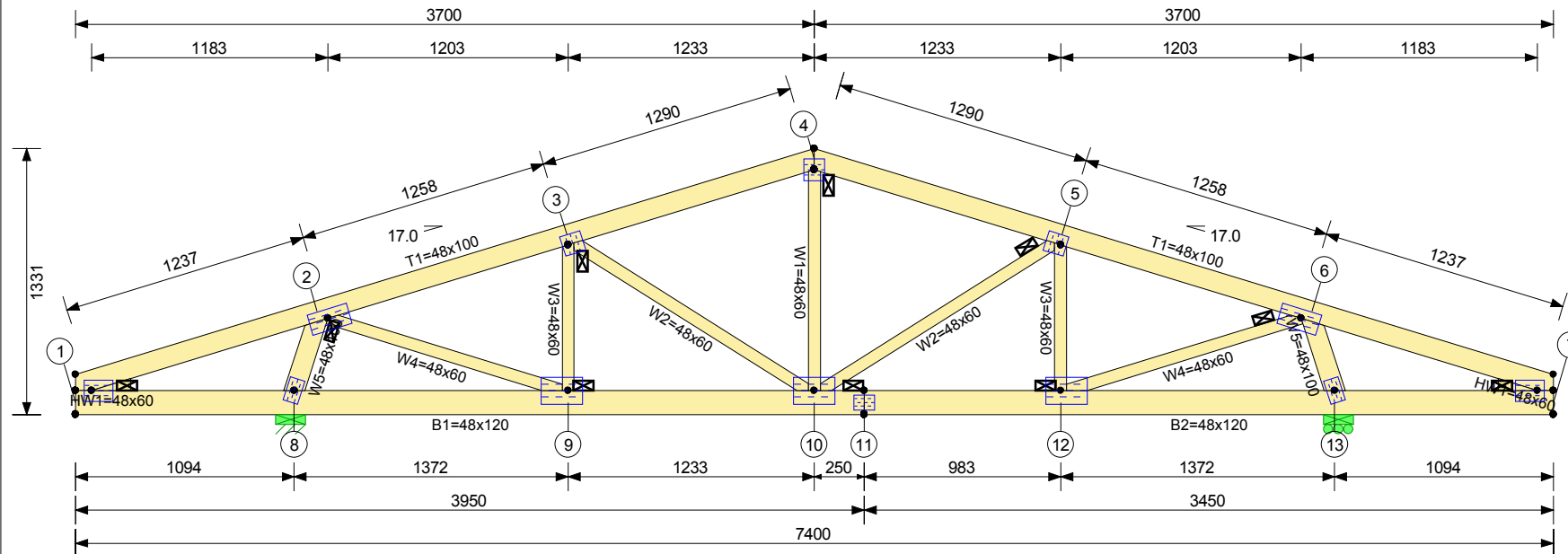
Acest desen trebuie insotit de nota de calcul.

Ctv. antiflambaj.

1	813 GNA20	2	1010 GNA20	3	1015 GNA20	4	1010 GNA20	5	1010 T150	6	1010 GNA20	7	813 GNA20	8	815 T150	11	813 GNA20	12	1015 GNA20	13	1015 GNA20	14	710 T150	15	1010 GNA20
16	1020 T150																								



Principiu de ctv. idem:



Interax ferme: 900 mm  
 Interax sipci: 350 mm  
 Altitudine: 0 m  
 Cantit. Ferma: 1  
 Greutate Ferma: 47 kg

**Incarcari (kN/m2)**

Talpa sup.

Acoperire: 0.260  
 Zapada: 2.000  
 Vant: 0.920

Talpa inf.

Plafon: 0.260

**Sectiuni**

Talpa sup. 48x100 R I SM  
 Talpa inf. 48x120 R I SM  
 Zabrele 48x100 R I SM  
 Zabrele 48x60 R I SM  
 Zabrele 48x60 R I SM

Zabrele  
 Zabrele  
 Zabrele  
 Zabrele

Cubaj Net (m3) : 0.108  
 Cubaj Brut (m3) : 0.117

**Conectori**

Supr.totala T150 1.49  
 3NA20 40.82

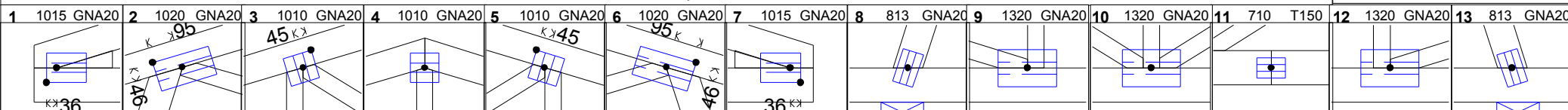
**React. Max. Reazem (kN)**

Nd	Ver(N)	C	Or(E)	C	Asc(E)	C
8	10.867	6	0.944	12	-5.901	14
13	10.201	1	0.000	6	-5.901	14

Scara 1:34

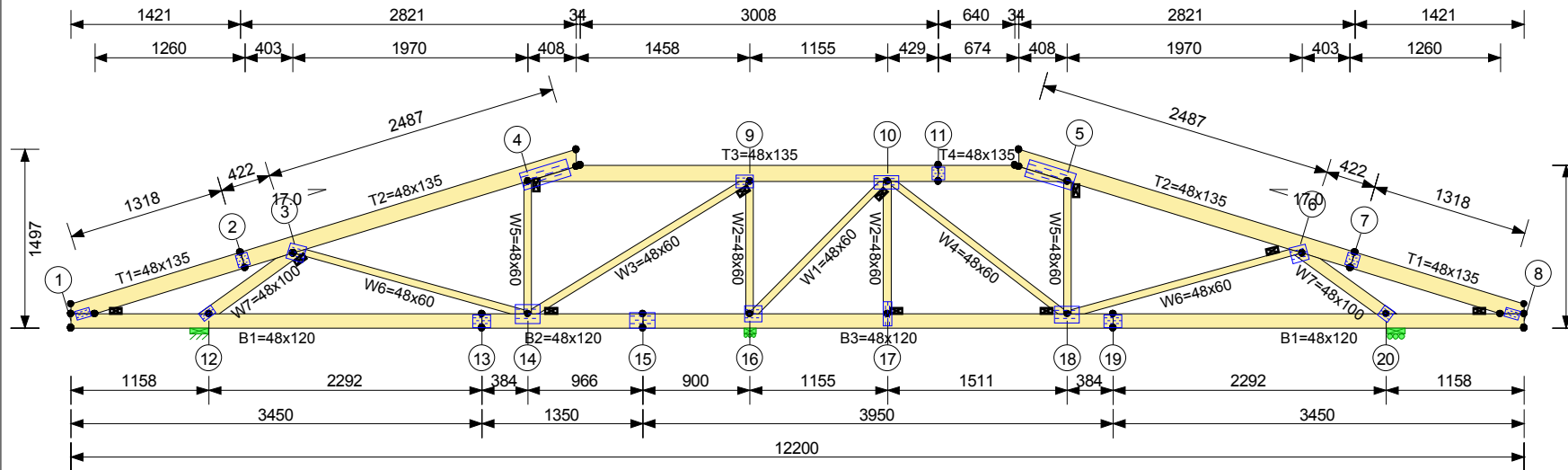
Acest desen trebuie insotit de nota de calcul.

Ctv. antiflambaj.





Principiu de ctv. idem:



Interax ferme: 900 mm  
 Interax sipci: 350 mm  
 Altitudine: 0 m  
 Cantit. Ferme: 1 (2 plis)  
 Greutate Ferma: 182 kg

**Incarcari (kN/m2)**

Talpa sup.

Acoperire: 0.260  
 Zapada: 2.000  
 Vant: 0.920

Talpa inf.

Plafon: 0.260

**Sectioni**

Talpa sup. 48x135 R I SM  
 Talpa inf. 48x120 R I SM  
 Zabrele 48x100 R I SM  
 Zabrele 48x60 R I SM

Zabrele  
 Zabrele  
 Zabrele

Cubaj Net (m3) : 0.414  
 Cubaj Brut (m3) : 0.458

**Conectori**

Supr.totala T150 102.41  
 3NA20 60.96

**React. Max. Reazem (kN)**

Nd	Ver(N)	C	Or(E)	C	Asc(E)	C
16	34.166	6	0.000	1	-23.908	14
12	10.772	6	0.961	12	-5.901	14
20	12.918	1	0.000	2	-7.711	14

Scara 1:57

Acest desen trebuie insotit de nota de calcul.

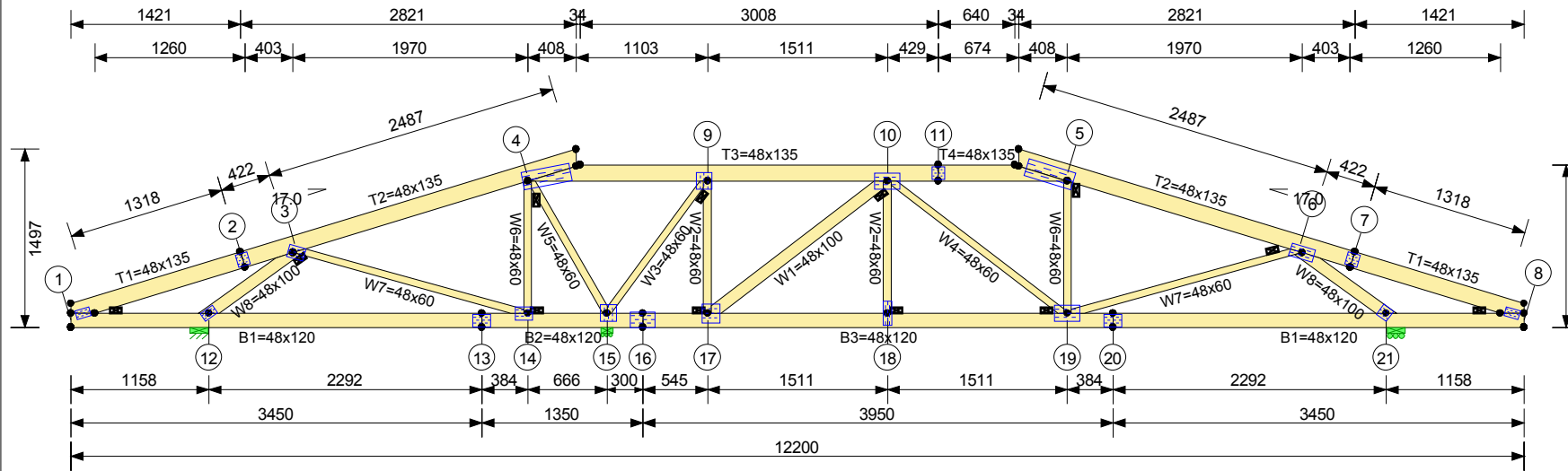
Ctv. antiflambaj.

1	2	3	4	5	6	7	8	9	10	11	12	13
813 GNA20	1010 T150	1315 GNA20	1540 T150	1540 T150	1315 GNA20	1010 T150	813 GNA20	1015 GNA20	1020 GNA20	1010 T150	813 GNA20	1015 T150
14	15	16	17	18	19	20						
1520 GNA20	1320 T150	1315 GNA20	820 GNA20	1320 GNA20	1015 T150	1010 GNA20						





Principiu de ctv. idem:



Interax ferme: 900 mm  
 Interax sipci: 350 mm  
 Altitudine: 0 m  
 Cantit. Ferme: 1 (2 plis)  
 Greutate Ferma: 187 kg

**Incarcari (kN/m2)**

Talpa sup.

Acoperire: 0.260  
 Zapada: 2.000  
 Vant: 0.920

Talpa inf.

Plafon: 0.260

**Sectioni**

Talpa sup. 48x135 R I SM  
 Talpa inf. 48x120 R I SM  
 Zabrele 48x100 R I SM  
 Zabrele 48x60 R I SM

Cubaj Net (m3) : 0.426  
 Cubaj Brut (m3) : 0.469

**Conectori**

Supr.totala T150 118.54  
 3NA20 49.64

**React. Max. Reazem (kN)**

Nd	Ver(N)	C	Or(E)	C	Asc(E)	C
15	23.645	6	0.000	2	-14.786	14
12	5.032	6	0.961	12	-1.786	14
21	15.818	1	0.000	6	-9.737	14

Scara 1:57

Acest desen trebuie insotit de nota de calcul.

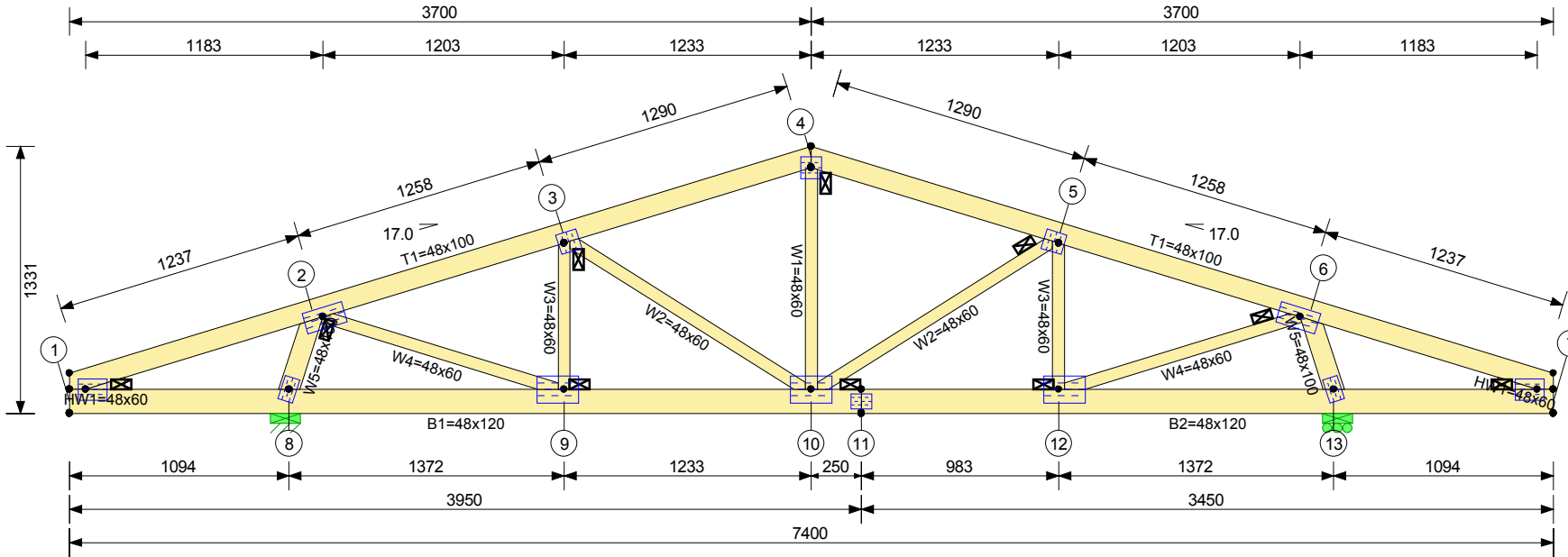
Ctv. antiflambaj.

1	813	GNA20	2	1010	T150	3	1015	GNA20	4	1540	T150	5	1540	T150	6	1020	GNA20	7	1010	T150	8	813	GNA20	9	1315	GNA20	10	1320	GNA20	11	1010	T150	12	813	GNA20	13	1015	T150





Principiu de ctv. idem:



Interax ferme: 900 mm  
 Interax sipci: 350 mm  
 Altitudine: 0 m  
 Cantit. Ferme: 1 (2 plis)  
 Greutate Ferma: 95 kg

**Incarcari (kN/m2)**

Talpa sup.

Acoperire: 0.260  
 Zapada: 2.000  
 Vant: 0.920

Talpa inf.

Plafon: 0.260

**Sectiuni**

Talpa sup. 48x100 R I SM  
 Talpa inf. 48x120 R I SM  
 Zabrele 48x100 R I SM  
 Zabrele 48x60 R I SM  
 Zabrele 48x60 R I SM  
 Zabrele  
 Zabrele  
 Zabrele

Cubaj Net (m3) : 0.215  
 Cubaj Brut (m3) : 0.233

**Conectori**

Supr.totala T150 2.98  
 3NA20 81.65

**React. Max. Reazem (kN)**

Nd	Ver(N)	C	Or(E)	C	Asc(E)	C
8	27.568	6	0.944	5	-14.559	14
13	27.693	2	0.000	5	-15.397	14

Scara 1:34

Acest desen trebuie insotit de nota de calcul.

Ctv. antiflambaj.

